

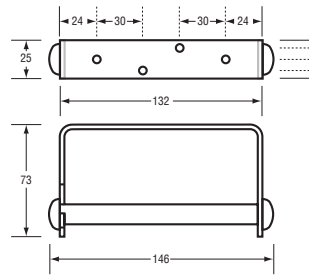


**Code** ML 113 & ML 513

**Material** ML 113: #304 Stainless Steel  
ML 513: Aluminium

**Finish/Specify** **ML 113:** Satin Stainless Steel  
**ML 513:** Brushed Aluminium

**Mounting Capacity** Surface Mount Visible Fix  
Holds one standard toilet roll



## Single Toilet Roll Holder

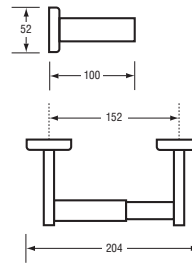


**Code** ML 255 S & ML 255 B

**Material** #304 Stainless Steel Mounts,  
Chrome Plated ABS Roller

**Finish/Specify** **ML 255 S:** Satin Stainless Steel (Shown)  
**ML 255 B:** Polished Stainless Steel

**Mounting Capacity** Surface Mount Concealed Fix  
Holds one standard toilet roll



## Single Toilet Roll Holder

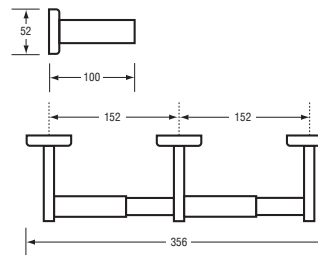


**Code** ML 256 S & ML 256 B

**Material** #304 Stainless Steel Mounts,  
Chrome Plated ABS Rollers

**Finish/Specify** **ML 256 S:** Satin Stainless Steel (Shown)  
**ML 256 B:** Polished Stainless Steel

**Mounting Capacity** Surface Mount Concealed Fix  
Holds two standard toilet rolls



## Double Toilet Roll Holder



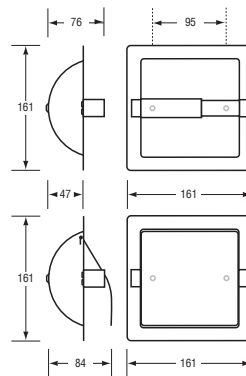
**Code** ML 260 & ML 261 Series

**Material** #304 Stainless Steel Body, 0.8mm Thickness  
Chrome Plated Die Cast Zamak Brackets &  
Chrome Plated ABS Roller

**Finish/Specify** **ML 260 S:** Satin SS Without Hood (Shown)  
**ML 260 B:** Polished SS Without Hood  
**ML 261 S:** Satin SS With Hood  
**ML 261 B:** Polished SS With Hood

**Mounting Capacity** Recess Mount Visible Fix  
Holds one standard toilet roll

**Wall Opening** 140mmW x 140mmH x 51mmD



## Recessed Single Toilet Roll Holder

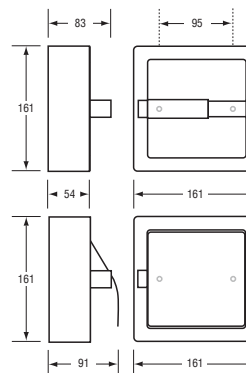


**Code** ML 260 SM & ML 261 SM Series

**Material** #304 Stainless Steel Body, 0.8mm Thickness  
Chrome Plated Die Cast Zamak Brackets &  
Chrome Plated ABS Roller

**Finish/Specify** **ML 260 SM S:** Satin SS Without Hood  
**ML 260 SM B:** Polished SS Without Hood  
**ML 261 SM S:** Satin SS With Hood (Shown)  
**ML 261 SM B:** Polished SS With Hood

**Mounting Capacity** Surface Mount Visible Fix  
Holds one standard toilet roll



## Single Toilet Roll Holder

